

==== Shimadzu LabSolutions Analysis Report =====

Sample Name : DL V9 R8
 Sample ID :
 Data Filename : DL V9 R8_20240717_DL V9_SFB_B_ST1_0.8 mL_45 min_Start_002.lcd
 Method Filename : SFB_B_ST1_0.8 mL_45 min_Start.lcm
 Batch Filename : 20240717_DL V9.lcb
 Vial # : 1-2
 Injection Volume : 10 uL
 Date Acquired : 7/17/2024 4:28:24 PM
 Date Processed : 7/17/2024 5:13:24 PM

Sample Type : Unknown
 Acquired by : System Administrator
 Processed by : System Administrator

<Method>

<<Header>>

Generated : 4/24/2024 3:47:23 PM
 GeneratedBy : System Administrator
 Modified : 7/15/2024 12:15:05 PM
 ModifiedBy : System Administrator

<<System Controller>>

Model : SCL-40
 Event1 : Off
 Event2 : Off
 Sample Load Timing : Off

<<Data Acquisition>>

LC Stop Time : 45.00 min
 Detector A Name : Detector A
 Detector A Sampling Frequency : 2 Hz
 Detector A Start Time : 0.00 min
 Detector A End Time : 45.00 min

<<Pump>>

Mode : Isocratic flow
 Pump A : LC-40D
 Pump A Flow/Pressure : Flow
 Pump System A Flow : 0.8000 mL/min
 Pump System A Flow Slope : 30.00 min
 Pump A PressMax : 90 bar
 Pump A PressMin : 0 bar
 Pump A Valve Model : Switching Valve
 Pump A Valve : B
 Pump A Compressibility Setting : On
 Pump A Mobile Phase Settings : 0.45 /GPa

<<Autosampler>>

Autosampler Model : SIL-40
 Enable Autosampler : Use
 Rinse Type : External only
 Specify Plate : Off
 Rinsing Volume : 500 uL
 Cut Off Loop : Off
 Specify Needle Stroke : Off
 Rinsing Speed : 35 uL/sec
 Sampling Speed : 5.0 uL/sec
 Rinse Port R0 Purge Time : 2.0 min
 Measuring Line Purge Time : 5.0 min
 Rinse Mode : Before and after aspiration
 Rinse Dip Time : 0 sec
 Measuring Line Purge Volume : 100 uL
 Air Gap Volume : Off
 Rinse Port Liquid : R0

<<Sample Pretreatment>>

Mode : Standard

<<Oven>>

Oven Model : CTO-40C
 Enable Oven : Use
 Oven Temperature : 25 C
 Maximum Temperature : 105 C

Ready Check : On
 Wait Time : 5 min
 Ready Range : 1.0 C
 Fan Speed : Auto
 Cooler Mode : Auto
 Valve 1/L : FCV-0206
 Valve 1/L Position : 1: Column1

<<Detector A>>

Model : RID-20A
 Mode : Analytical
 Polarity : +
 Use Cell Temp. : Use
 Cell Temp. : 40.0 C
 Response : 1.5 sec
 Intensity Unit : Volt
 Auxiliary Range : 1.0E-3 RIU/V
 Recorder Range : 100.00 uRIU/FS
 Synchronize with Auxiliary : Off
 Purge Time : 20 min

<<LC Time Program>>

Time	Module Controller	Command	Value	Comment
45.00		Stop		

<<Peak Integration>>

<Detector A>

Channel : Ch1
 Width : 5 sec
 Slope : 2000 uV/min
 Drift : 0 uV/min
 T.DBL : 1000 min
 Max Slices : 0
 Peak Top Detection : Normal
 RT Compensation Mode : Fine
 Min.Area/Height is made effective in Manual Integration : Off
 Min.Area/Height : 1000 counts
 Calculated by : Area
 Noise Calculation Settings : Noise Data : Current Data
 Calculation Method : ASTM
 Range : Whole Range
 Interval : 0.5 min
 Include the Peak Detected Range : Off
 Detection Limit Coefficient : 3.3
 Quantitative Limit Coefficient : 10.0
 Drift Calculation Settings : 0.000 - 15.000 min

<<Integration Time Program(Method)>>

<Detector A>

Channel : Ch1
 Time Program : None

<<Integration Time Program(Data)>>

<Detector A>

Channel : Ch1
 Time Program : None

<<Identification>>

<Detector A>

Window/Band : Window
 Window : 5.00 %
 Identification Method : Absolute
 Peak Selection : Closest Peak
 Display not identified peaks : Not display

<<Quantitative>>

<Detector A>

Quantitative Method : External Standard
 Calculated by : Area
 # of Calibration Levels : 14
 Curve Fit Type : Linear
 Zero : Not Forced
 Weighting Method : None
 X Axis of Calib. Curve : Conc.
 Units : mol/L
 Format of Conc. : Decimals
 Format of Conc. Figure : 5
 Group Type : Not Used
 Check %Dev(Standard) : No

Check Accuracy[%](Standard) : No
 Check %Dev(Control) : No
 Check Accuracy[%](Control) : No
 Check %Dev(Additive) : No
 Check Accuracy[%](Additive) : No
 Check %Dev(Unknown) : No
 Check Accuracy[%](Unknown) : No
 Check Quantitation Limit : No
 Check Detect Limit : No

<<Compound Table>>

<Detector A>

ID# : 1
 Name : Methanol
 Type : Target
 Channel : Ch1
 Retention Time : 14.400 min
 Retention Index : 0
 Concentration : [1]=3.016738 [2]=1.049395 [3]=0.4943277
 [4]=0.2893701 [5]=0.1127578 [6]=0.06136267
 [7]=0.01619725 [8]=3.016738 [9]=1.049395
 [10]=0.4943277 [11]=0.2893701 [12]=0.1127578
 [13]=0.06136267 [14]=0.01619725
 Peak Selection : Default(Closest Peak)
 Calculated by : Default(Area)
 Curve Fit Type : Default(Linear)
 Zero : Default(Not Forced)
 Weight : Default(None)
 Window/Band : Default(Window)
 Spiked : 0.000
 1st Coefficient : 4.720087e+005
 Intersection : 1.693726e+003
 Correction Factor : 1.000000
 Standard concentration factor : 1.000000

ID# : 2
 Name : Glycerin
 Type : Target
 Channel : Ch1
 Retention Time : 10.000 min
 Retention Index : 0
 Concentration : [1]=2.958375 [2]=1.078646 [3]=0.5353454
 [4]=0.3066948 [5]=0.114594 [6]=0.05901699
 [7]=0.0117174 [8]=2.958375 [9]=1.078646
 [10]=0.5353454 [11]=0.3066948 [12]=0.114594
 [13]=0.05901699 [14]=0.0117174
 Peak Selection : Default(Closest Peak)
 Calculated by : Default(Area)
 Curve Fit Type : Default(Linear)
 Zero : Default(Not Forced)
 Weight : Default(None)
 Window/Band : Default(Window)
 Spiked : 0.000
 1st Coefficient : 7.326784e+006
 Intersection : 2.573900e+005
 Correction Factor : 1.000000
 Standard concentration factor : 1.000000

ID# : 3
 Name : n-Propanol
 Type : Target
 Channel : Ch1
 Retention Time : 20.000 min
 Retention Index : 0
 Concentration : [1]=3.02526 [2]=1.092217 [3]=0.5139845
 [4]=0.3105323 [5]=0.09785473 [6]=0.04497364
 [7]=0.01087275 [8]=3.02526 [9]=1.092217
 [10]=0.5139845 [11]=0.3105323 [12]=0.09785473
 [13]=0.04497364 [14]=0.01087275
 Peak Selection : Default(Closest Peak)
 Calculated by : Default(Area)
 Curve Fit Type : Default(Linear)
 Zero : Default(Not Forced)
 Weight : Default(None)
 Window/Band : Default(Window)
 Spiked : 0.000
 1st Coefficient : 3.955755e+006
 Intersection : -2.585461e+004
 Correction Factor : 1.000000

Standard concentration factor : 1.000000

ID# : 4
 Name : 1,2 Propandiol
 Type : Target
 Channel : Ch1
 Retention Time : 12.400 min
 Retention Index : 0
 Concentration : [1]=2.977546 [2]=1.016412 [3]=0.5030017
 [4]=0.3027638 [5]=0.1023958 [6]=0.04970167
 [7]=0.01157971 [8]=2.977546 [9]=1.016412
 [10]=0.5030017 [11]=0.3027638 [12]=0.1023958
 [13]=0.04970167 [14]=0.01157971
 Peak Selection : Default(Closest Peak)
 Calculated by : Default(Area)
 Curve Fit Type : Default(Linear)
 Zero : Default(Not Forced)
 Weight : Default(None)
 Window/Band : Default(Window)
 Spiked : 0.000
 1st Coefficient : 5.771075e+006
 Intersection : 6.007717e+004
 Correction Factor : 1.000000
 Standard concentration factor : 1.000000

ID# : 5
 Name : 1,3 Propandiol
 Type : Target
 Channel : Ch1
 Retention Time : 13.000 min
 Retention Index : 0
 Concentration : [1]=2.976375 [2]=0.9968958 [3]=0.4990984
 [4]=0.2900131 [5]=0.10734 [6]=0.04944145
 [7]=0.0100184 [8]=2.976375 [9]=0.9968958
 [10]=0.4990984 [11]=0.2900131 [12]=0.10734
 [13]=0.04944145 [14]=0.0100184
 Peak Selection : Default(Closest Peak)
 Calculated by : Default(Area)
 Curve Fit Type : Default(Linear)
 Zero : Default(Not Forced)
 Weight : Default(None)
 Window/Band : Default(Window)
 Spiked : 0.000
 1st Coefficient : 5.532080e+006
 Intersection : 6.014722e+004
 Correction Factor : 1.000000
 Standard concentration factor : 1.000000

ID# : 6
 Name : iso-Propanol
 Type : Target
 Channel : Ch1
 Retention Time : 16.825 min
 Retention Index : 0
 Concentration : [1]=3.03666 [2]=1.003405 [3]=0.5418687
 [4]=0.3101858 [5]=0.1067771 [6]=0.04972951
 [7]=0.01397083 [8]=3.03666 [9]=1.003405
 [10]=0.5418687 [11]=0.3101858 [12]=0.1067771
 [13]=0.04972951 [14]=0.01397083
 Peak Selection : Default(Closest Peak)
 Calculated by : Default(Area)
 Curve Fit Type : Default(Linear)
 Zero : Default(Not Forced)
 Weight : Default(None)
 Window/Band : Default(Window)
 Spiked : 0.000
 1st Coefficient : 3.797216e+006
 Intersection : -2.284739e+004
 Correction Factor : 1.000000
 Standard concentration factor : 1.000000

ID# : 7
 Name : Hydroxyacetone
 Type : Target
 Channel : Ch1
 Retention Time : 13.300 min
 Retention Index : 0
 Concentration : [1]=2.855514 [2]=0.9609004 [3]=0.4875675
 [4]=0.3072624 [5]=0.1038742 [6]=0.04860286

	[7]=0.009361501	[8]=2.855514	[9]=0.9609004
	[10]=0.4875675	[11]=0.3072624	[12]=0.1038742
	[13]=0.04860286	[14]=0.009361501	
Peak Selection	: Default(Closest Peak)		
Calculated by	: Default(Area)		
Curve Fit Type	: Default(Linear)		
Zero	: Default(Not Forced)		
Weight	: Default(None)		
Window/Band	: Default(Window)		
Spiked	: 0.000		
1st Coefficient	: 4.865699e+006		
Intersection	: 5.855022e+004		
Correction Factor	: 1.000000		
Standard concentration factor	: 1.000000		

ID#	: 8		
Name	: Ethylenglykol		
Type	: Target		
Channel	: Ch1		
Retention Time	: 12.200 min		
Retention Index	: 0		
Concentration	[1]=2.933794	[2]=1.030353	[3]=0.4898163
	[4]=0.3033639	[5]=0.09840986	[6]=0.059971
	[7]=0.01068632	[8]=2.933794	[9]=1.030353
	[10]=0.4898163	[11]=0.3033639	[12]=0.09840986
	[13]=0.059971	[14]=0.01068632	

Peak Selection	: Default(Closest Peak)		
Calculated by	: Default(Area)		
Curve Fit Type	: Default(Linear)		
Zero	: Default(Not Forced)		
Weight	: Default(None)		
Window/Band	: Default(Window)		
Spiked	: 0.000		
1st Coefficient	: 4.284813e+006		
Intersection	: 4.449721e+003		
Correction Factor	: 1.000000		
Standard concentration factor	: 1.000000		

ID#	: 9		
Name	: Ethanol		
Type	: Target		
Channel	: Ch1		
Retention Time	: 16.000 min		
Retention Index	: 0		
Concentration	[1]=3.010594	[2]=1.02339	[3]=0.5257763
	[4]=0.2939754	[5]=0.0961865	[6]=0.04960971
	[7]=0.01299818	[8]=3.010594	[9]=1.02339
	[10]=0.5257763	[11]=0.2939754	[12]=0.0961865
	[13]=0.04960971	[14]=0.01299818	

Peak Selection	: Default(Closest Peak)		
Calculated by	: Default(Area)		
Curve Fit Type	: Default(Linear)		
Zero	: Default(Not Forced)		
Weight	: Default(None)		
Window/Band	: Default(Window)		
Spiked	: 0.000		
1st Coefficient	: 2.109543e+006		
Intersection	: -9.590194e+003		
Correction Factor	: 1.000000		
Standard concentration factor	: 1.000000		

ID#	: 10		
Name	: Propionsäure		
Type	: Target		
Channel	: Ch1		
Retention Time	: 13.600 min		
Retention Index	: 0		
Concentration	[1]=2.962704	[2]=0.9915078	[3]=0.5019324
	[4]=0.3085198	[5]=0.1036906	[6]=0.04835313
	[7]=0.01168534	[8]=2.962704	[9]=0.9915078
	[10]=0.5019324	[11]=0.3085198	[12]=0.1036906
	[13]=0.04835313	[14]=0.01168534	

Peak Selection	: Default(Closest Peak)		
Calculated by	: Default(Area)		
Curve Fit Type	: Default(Linear)		
Zero	: Default(Not Forced)		
Weight	: Default(None)		
Window/Band	: Default(Window)		
Spiked	: 0.000		

1st Coefficient : 4.601450e+006
 Intersection : -1.609005e+003
 Correction Factor : 1.000000
 Standard concentration factor : 1.000000

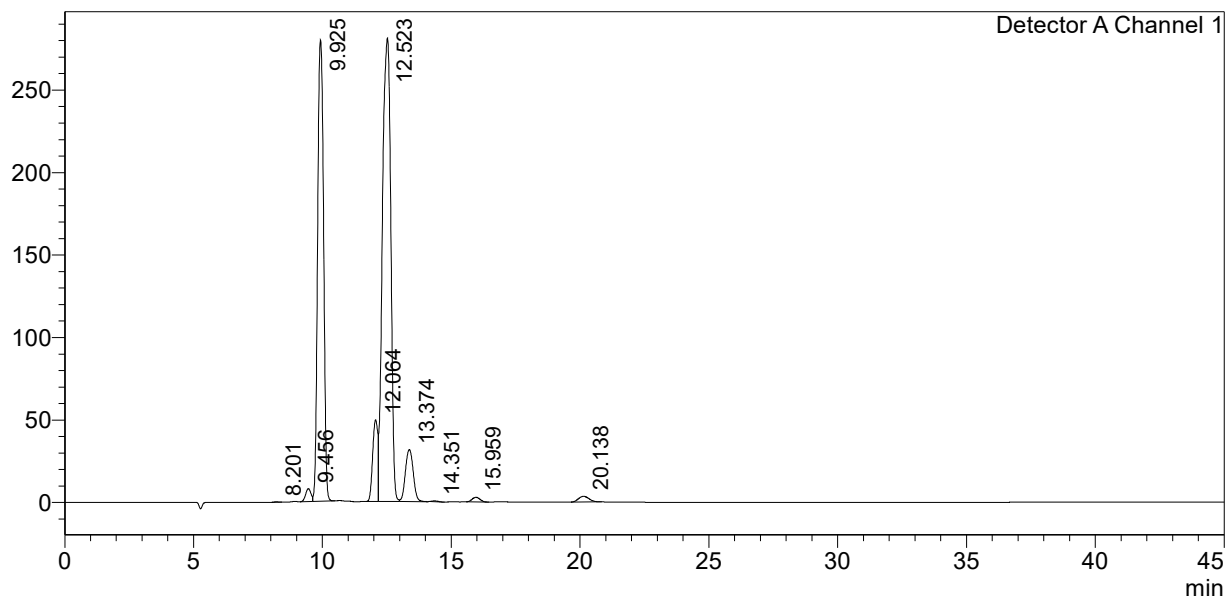
<<Column Performance>>

<Detector A>

Calculation Method : USP
 Unretained Peak Time : Time at 1st Peak
 Column Length : 150 mm
 Calculate Identified Peaks Only : Off
 Calculation of Relative Retention Time : Off

<Chromatogram>

mV



<Peak Table>

Detector A Channel 1

Peak#	Ret. Time	Area	Height	Conc.	Unit	Mark	Name
1	8.201	3164	282	0.000			
2	9.456	111607	7833	0.000			
3	9.925	4499437	279646	0.579	mol/L	V	Glycerin
4	12.064	697545	49504	0.162	mol/L		Ethylenglykol
5	12.523	6339720	280941	1.088	mol/L	V	1,2 Propandiol
6	13.374	668929	31486	0.125	mol/L	V	Hydroxyacetone
7	14.351	8605	506	0.015	mol/L		Methanol
8	15.959	59511	2774	0.033	mol/L		Ethanol
9	20.138	98675	3441	0.031	mol/L		n-Propanol
Total		12487194	656414				